



PMI Lahore Newsletter

Election Season at Lahore Chapter



Dear Readers,

Welcome to another issue of the PMI Lahore Newsletter.

Since our earlier issue of Nov-2007, things have been pretty exciting at Lahore Chapter. In 3 months time we have been joined by more than 50 members taking our official member count to around 370 with more members joining everyday. Also, the number of PMPs have also been increasing steadily and currently we hold the highest number of PMPs within Pakistan.

Also, our continued successful involvement with Punjab Government projects has proven the effectiveness of PMPs in management roles and currently PMPs are in great demand in Public as well as Private sectors within the province. This factor alone has been fueling our memberships and conversions.

Due to our success in implementing project management in Public sector, PMI Network featured projects in Punjab in its December 2007 issue.

During December 2007 elections were held for those Chapter Board positions which were expiring in December 2007. Participation and interest of Chapter members was very encouraging. The entire process was done in accordance with the Chapter bye-laws. Result was announced and the newly selected office bearers were sworn-in.

Finally, I would like to appreciate the hard work of the team of volunteers in preparing, finalizing and issuing this second issue of our newsletter. More members are joining in effort and we are trying to further improve upon existing quality. Your suggestions in this regard can make this publication a must read for anyone who is connected to projects or project management in our region. Happy reading...!

Khalid Ahmad Khan, PMP

**President
PMI Lahore Chapter**

New Project Management Standards by PMI

Keeping in view the changing requirements and increasing complexity of upcoming projects, PMI has been working on new standards to ensure that the areas requiring specialists in these areas should have clear guidelines. Some of the new standards being evolved include Practice Standards for Project Risk Management and Practice Standard for Project Schedule Management. Volunteer teams consisting of PMI members worldwide are involved in defining and finalizing these standards. Exposure drafts are being peer reviewed and soon we will see examinations available for both of these specialty based standards. Further details will soon be available on PMI website.

Inside this issue:

<i>PMI Global Congress Asia Pacific—2008</i>	2
<i>PMP Preparation Training Program</i>	3
<i>Winners of PMP Preparation Course Incentives</i>	2
<i>Project Maker Training Courses—Registered with PMI</i>	3
<i>Monte-Carlo Analysis in Risk Management</i>	3
<i>Project Showcase—Software Technology Park</i>	3
<i>Joke of the Month</i>	4
<i>Member In Focus—Mr. Rizwan Amin Sheikh</i>	4
<i>Volunteering at PMI</i>	4
<i>Article—World Asphalt Demand to Rise</i>	5
<i>Product Review— Primavera 6.0</i>	5



PMI Global Congress Asia Pacific—2008

By Lt. Col. (R) Arif Majeed, PMP



Sydney, Australia will host the PMI Global Congress Asia Pacific 2008

PMI Global Congress events are a series of major project management educational and networking events organized by PMI. These events allow participants representing various industries and countries to interact and share their knowledge on topics of mutual interest.

The upcoming Congress is being hosted by Sydney, Australia during March 3-5, 2008. Sydney is the most populous city in Australia, with a population of approximately 4.12 million. Sydney is the state capital of New South Wales. Sydney is located on Australia's south-east coast. The city is built around Port Jackson, which includes Sydney Harbour, leading to the city's nickname, "the Harbour City". It is Australia's largest financial centre.

Sydney's leading economic sectors include property and business services, manufacturing, tourism, media, health and community services.

Sydney is notable for its beaches and twin landmarks: the Sydney Opera House and the Harbour Bridge. Sydney has a highly developed urban transportation infrastructure including extensive train, taxi, bus and ferry networks.

For further information and registration for this Congress can be reviewed at www.PMI.org/AP08.

More Global Congress events are coming up including PMI Global Congress 2008 EMEA in Malta during May 19-21, 2008 and PMI Global Congress 2008 North America in Colorado during October 18-21, 2008. Further details are available on www.PMI.org.

PMP Preparation Training Program

By M. Naveed Akhtar, PMP



Group of participants from a PMP Preparation Training Program

Lahore Chapter has kept on with its commitment to impart quality project management training to professionals in the public and private sectors

and has conducted one training in January 2008, while a second one has been planned for February 2008.

For both of the above-mentioned courses, Lahore Chapter has partnered with BMC and Dr. Azhar Mansur Khan, Associate Dir. BMC, has been con-

ducting this 5-day training workshop in Lahore.



These courses have maintained their quality and success rate of participants attending these courses is still among the highest as compared to other vendors conducting similar courses in Lahore.

Further courses are also being planned every month and interested readers can contact the PMI Lahore Chapter Coordinator for being placed in one of the upcoming courses.



Preparing a project WBS increases the success chances by as much as 15%

Winners of PMP Preparation Course Incentives

By M. Naveed Akhtar, PMP

Earlier, Lahore Chapter had very interesting incentive attached to these trainings e.g. PMI members got 33% discount on the course fee, and after the course the first 6 participants of every batch achieving success in PMP examination received 50% to 100% refund of their PMP examination fee (depending upon their sequence of clearing the PMP examination).

Lahore Chapter has disbursed incentive cheques to the winners of the PMP Preparation Course Contest for the earlier courses.

The winners of this competition include Mr. Shahid Rafique, Hafiz M Azeem Tariq, Mr. M. Asim Butt, Mr. Farhan Azimi, Mr. Shahid Afzal, Mr. Nasir Abbas and Mr. Adeel Khan.

Additionally, more participants from other batches have also reported their certification achievement status and cheques issuance is in process.



Project Maker Training Courses—Registered with PMI

By Noman Zafar Chaudry, PMP



Project Maker is a very simple, free and easy to use project planning and monitoring tool custom developed for the inception and initial planning of projects through an intuitive interface.

Currently there are two courses available with Lahore Chapter which provide basic skills including detailed overview of scope definition & WBS preparation, Schedule preparation, and Earned Value Monitoring. The extended course also goes into the implementation of these concepts using Project Maker.

The short course is useful as a refresher/ introduction to the practitioners who have been appointed at management positions and are unaware of the basic concepts used in Modern Project Management. While the extended course is useful for fresh engi-

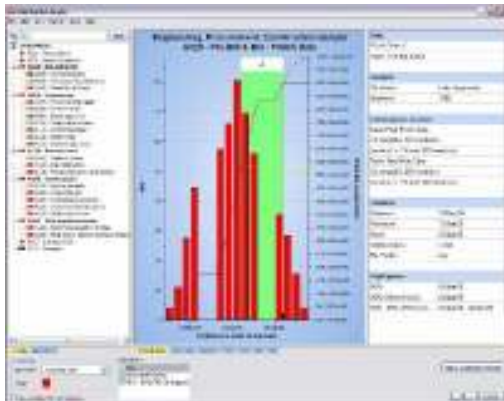
neers, planning personnel and everyone else who is involved in the planning and monitoring aspect of projects.

Course ID	Title	Duration	PDU's
CWPS1002	A Practical Approach to Planning & Monitoring	1 Day	6
CWPW3001	Cash & Work Plan Preparation Using Project Maker	3 Days	16

For further information about these courses, kindly contact the Lahore Chapter Coordinator.

Monte-Carlo Analysis in Risk Management

By Najam Ahmad Shah, PMP



A Monte Carlo method is a computational algorithm which relies on repeated random sampling to compute its results. Monte Carlo methods are often used when simulating physical and mathematical systems. Monte Carlo methods tend to be used when it is infeasible or impossible to compute an exact result with a deterministic algorithm.

The term Monte Carlo was coined in the 1940s by

physicists working on nuclear weapon projects in the Los Alamos National Laboratory.

An interesting application of Monte Carlo analysis is in finding the risk involved with a project schedule involving cost and time. Primavera Pertmaster addresses full lifecycle risk management through advanced Monte Carlo based cost and schedule analytics. The risk analysis is based on a scientific method using a number generator in a fixed number of iterations. There are 10 distribution types available for this analysis. Risk analysis can be conducted both at the project and portfolio level.

More information on Pertmaster can be found at www.PertMaster.com.

Project Showcase—Software Technology Park

By Khalid Bashir, PMP



Punjab Information Technology Board has been taking critical initiatives in promoting and supporting the Information Technology industry in Punjab. One of the latest major project initiated in this direction is the construction of Software Technology Park in Lahore.

This endeavor will create a 17-storey building having 475,000 SFT of office space and an additional car-parking tower which will be able to park 325 cars. All latest facilities such as fiber optic based broadband internet, central air

-conditioning and heating arrangements, backup power arrangements, indoor cafes and restaurants, medical center, banking and ATMs will be available within the premises of the building.

Work on this project is in full swing and the target date for its completion is December 2008. For further information and visuals on this project kindly visit www.PITB.gov.pk.

Joke of the Month



Sherlock Holmes and Dr Watson went on a camping trip.

After a good meal and a bottle of wine they lay down for the night, and went to sleep.

Some hours later, Holmes awoke and nudged his faithful friend.

"Watson, look up at the sky and tell me what you see."

Watson replied, "I see millions and millions of stars." "What does that tell you?"

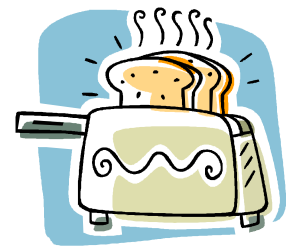
Watson pondered for a minute.

"Astronomically, it tells me that there are millions of galaxies and potentially billions of planets. Astrologically, I observe that Saturn is in Leo. Horologically, I deduce that the time is approximately a quarter past three. Theologically, I can see that God is all power-

ful and that we are small and insignificant. Meteorologically, I suspect that we will have a beautiful day tomorrow. What does it tell you?"

Holmes was silent for a minute, then spoke.

"Watson, you stupid! Somebody has stolen our tent."



Member In Focus—Mr. Rizwan Amin Sheikh

By Khalid Bashir, PMP



Mr. Rizwan Amin Sheikh is a former Assistant Professor of LUMS. He has also served as a Senior Manager at Deloitte Consulting, New York, USA which is a \$3.0 billion management consulting firm with 12,000 employees worldwide.

He holds MBA from Cleveland State University (USA) and B.Sc. in Information Systems from The Ohio State University (USA).

He has over 15 years of management consulting, information technology, ERP implementation and industry experience. He has served in Program Management Office (PMO) of Fortune 500/Multi-National companies and has advised CEOs, CFOs, CIOs and Board of Directors in implementing large-scale IT

solutions, business process reengineering, ERP, CRM, Supply Chain, and software development projects.

He is currently serving in the capacity of Chairman PITB. Being in a responsible position, he has greatly contributed towards the promotion of project management within the Punjab's IT industry. PITB currently has the highest number of PMPs concentrated within one department. At present there are 15 PMPs in PITB and are increasing further.

He has also played a very positive role in sponsoring Lahore Chapter for a number of events and we are sure that this support will be continued in future as well.

Volunteering at PMI

By Najam Ahmad Shah, PMP

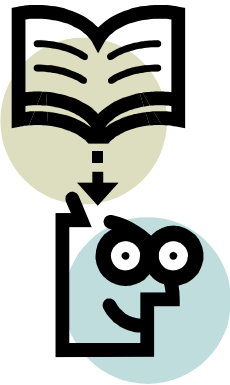


Volunteers are the lifeblood and foundation of PMI. They are working in their communities and organizations, in hundreds of cities all around the world, to spread the word about the benefits of project management. All new standards and exams based on these standards are prepared, reviewed and finalized by volunteers.

Working as a volunteer with PMI not only allows volunteers to improve upon their knowledge, skills and expertise as well as earning PDUs towards the annual membership renewal requirements.

During preparation of this newsletter, the latest opportunities for volunteering included CAPM Examination Developer, Component Awards Review Committee, PMI Publication Reviewer, PMP Examination Developer, Professional Awards Reviewer, Program Manager Examination Developer, Project Risk Management Exam Developer, and Project Schedule Management Exam Developer.

New opportunities are being added everyday and can be reviewed in the [Volunteer](http://www.PMI.org) section at www.PMI.org.



Article—World Asphalt Demand to Rise

By Ubaidullah Khan, PMP

With the increasing global infrastructure development activity, the demand of construction material has also been increasing sharply in the recent past. Since Cement has always been a most critical resource, so its shortage keeps on hitting the market.

However, a new study conducted by US-based market research company "The Freedonia Group" indicates that Asphalt (also called Bitumen) is another commodity which might become another highly demanded construction material during recent future. Worldwide demand for asphalt products is expected to increase by +2.6% per year reaching 123 million tonnes in 2011.

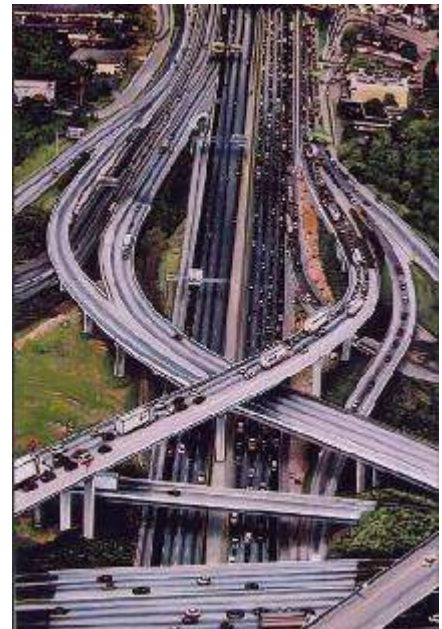
The report, "World Asphalt", said growth prospects for asphalt across the globe will vary widely, with the more developed regions of North America, Western Europe and Japan registering relatively slow growth, while developing economies, particularly in Asia, will post much more robust advances.

In the Asia/Pacific region, which accounted for 30% (32.6 million tonnes) of total world demand in 2006, growth is being driven by the rapid industrialisation being undertaken in developing industrial economies. Paving products, which accounted for 84% (103 million tonnes) of world asphalt demand in 2006, will continue to dominate consumption, reflecting improved levels of road building activity. Generally, said the report, asphalt emulsions and polymer modified asphalts will show faster gains, while asphalt cement and cutback asphalts will lag. Demand for asphalt in roofing products will increase +1.8% annually to 16 million tonnes in 2011.

Keeping in view these things, the mega-projects in the roads & highways sector being initiated in Pakistan, especially in Punjab, need to cater for this

increasing global demand for Asphalt, which might translate into higher international prices and longer delays in availability. The possibility of its availability becoming a bottle-neck in existing mega-projects is already being experienced in highways sector in Punjab, and the report predicts it to become even worse in the future.

The entire article is available at www.KHL.com web-site.



Product Review— Primavera 6.0 (P6™)

By Yaser J. Pasha, PMP

Primavera has recently released the latest version, Ver 6.0 (also known as P6).

P6 has an integrated project portfolio management (PPM) solution which provides a single interface for managing projects of any size, adapts to various levels of complexities within

a project, and intelligently scales to meet the needs of various roles, functions, or skill levels in any organization.

The improved web-functionality allows users to access most of the features through a simple browser and provides easier roll-out within geographically distributed teams. The portfolio management feature is quite robust and allows executive dashboards options within its web component. Option to easily import Primavera 3 (P3) plans also allows speedy conversion from old systems.

More details on this product can be found at www.Primavera.com website.

PMI Lahore Newsletter

Making Project Management Indispensable for Business Results

For any comment or participation in future issues of PMI Lahore Newsletter, please contact:

PMI Lahore Chapter
415, 4th Floor, Sadiq Plaza,
The Mall, Lahore
Pakistan

Phone: +92 42 7066879
Cell: +92 333 4475828
coordinator@pmlhr.org.pk

List Of PMI Lahore Chapter Office Bearers:

- | | |
|----------------------------|------------------------------------|
| • Mr. Khalid Ahmad Khan | President |
| • Mr. Rizwan Amin Sheikh | Vice President |
| • Mr. Yaser J. Pasha | Secretary |
| • Mr. M. Naveed Akhtar | Director Finance |
| • Mr. Ahsan Maqbool | Director Marketing & Communication |
| • Mr. Khalid Bashir | Director At Large |
| • Mr. Muhammad Yaqoob | Director At Large |
| • Lt. Col. (R) Arif Majeed | Director Professional Development |
| • Mr. Fayyaz Hussain Shah | Director Legal |
| • Mr. Muhammad Adeel Khan | Director Memberships |
| • Mr. Muhammad Amjad | Director Sponsorships & Events |

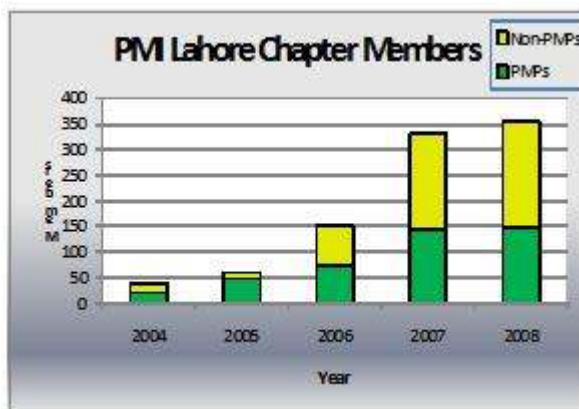
PM DAY EVENT 2 November 1st 2007.



Venue: Holiday Inn Hotel Lahore Pakistan.

PMI and Lahore Chapter

PMI Lahore Chapter growth has been very aggressive since its creation and the numbers have been doubling every year. Current active membership stands at 355 members by the end of January 2008, while more members are joining every day. Number of certified PMPs is also growing every day with a lot of PMPs coming from the Public Sector in Punjab.



About PMI

With more than 240,000 members in over 160 countries, PMI is the leading membership association for the project management profession. PMI is actively engaged in advocacy for the profession, setting professional standards, conducting research and providing access to a wealth of information and resources. PMI also promotes career and professional development and offers certification, networking and community involvement opportunities.

For more than 36 years, PMI has advanced the careers of practitioners who have made project management indispensable in achieving business results.